



# PERSONAL MATH TRAINER

## QUICK START GUIDE

---



# Contents

- Personal Math Trainer Quick Start Guide ..... 1
  
- Step One:** Set up a Class with PMT ..... 1
  
- Step Two:** Assign the PMT ..... 1
  
- Step Three:** Choose a Pathway..... 2

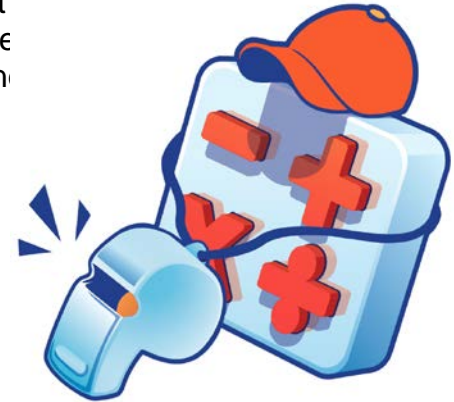
  - Pathway 1: Daily Intervention ..... 2
  - Pathway 2: Course Intervention..... 2
  - Pathway 3: Standards Intervention..... 2

- Step Four:** Generate Reports and Track Progress..... 3



## Personal Math Trainer Quick Start Guide

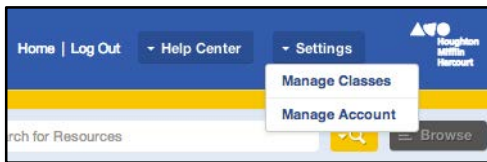
The Personal Math Trainer (or *PMT*) is an exciting new product from Houghton Mifflin Harcourt (HMH). PMT is a powerful tool that monitors student performance on tests, quizzes, and homework, and targets a student's unique needs in order to provide them with the specific help they need to excel. To provide each student with a personalized experience, HMH partnered with Knewton, a leader in adaptive technology.



PMT is located on Holt McDougal Online and can be assigned directly to students.

As students use the PMT, it collects data and uses that data to create personalized learning pathways. To begin using this adaptive technology in your classroom, follow the steps below.

### Step One: Set up a Class with PMT



- Navigate to Holt McDougal Online at <http://my.hrwc.com/>
- Click **Settings** and select **Manage Classes** to create your class and add students.
- Create your class. If Personal Math Trainer is enabled for the program you choose, you'll have access to all PMT features automatically.

### Step Two: Assign the PMT

While teaching the lessons in the first module, assign all of the ready-made PMT assignments and assessments for the module. This will allow Knewton to gather information about each individual student in order to begin creating a customized personal learning path for each student based on their performance.

Resource	Action
Personal Math Trainer: Unit 1 - Assessment Readiness (Tests and Quizzes)	<a href="#">View</a> <a href="#">Assign</a> <a href="#">Edit</a>
Personal Math Trainer: Module 1 - Are You Ready? (Tests and Quizzes)	<a href="#">View</a> <a href="#">Assign</a> <a href="#">Edit</a>
Personal Math Trainer: Module 1 - Assessment Readiness (Tests and Quizzes)	<a href="#">View</a> <a href="#">Assign</a> <a href="#">Edit</a>
Personal Math Trainer: Module 1 - Post-Test (Tests and Quizzes)	<a href="#">View</a> <a href="#">Assign</a> <a href="#">Edit</a>
Personal Math Trainer: Module 1 - Pre-Test (Tests and Quizzes)	<a href="#">View</a> <a href="#">Assign</a> <a href="#">Edit</a>



## Step Three: Choose a Pathway

After students have completed Module One, Knewton will have gathered enough information about each student's performance trends and patterns to be able to provide you with customized learning paths. You can choose 3 different ways to tap into the adaptive nature of the PMT and provide personalized support for each student:

### Pathway 1: Daily Intervention

When you assign Daily Intervention to students, it will provide the students with a warm up composed of prerequisite skills or prior grade level skills that have been identified by Knewton before the lesson practice, with a mastery level set to 90% by default. Assign this when students seem to struggle with prerequisites skills.

Please choose an assignment type:

Category:

Grade:

Show only active assignments

### Pathway 2: Course Intervention

When you assign Course Intervention to students, it will provide a study guide after students have completed the lesson practice if the student does not meet the mastery level of the assignment, which defaults to 65%. This will provide support for students that struggle with the skills and standards being taught in that particular lesson, or acceleration if students do well.

Please choose an assignment type:

Category:

Grade:

Show only active assignments

### Pathway 3: Standards Intervention

When you assign Standards Intervention, this pathway will provide support for specific standards. Standards-based interventions have a mastery level that defaults to 65%. Use this pathway when students are not successful with specific standards that were taught and they continue to struggle.

Please choose an assignment type:

Category:

Grade:

Show only active assignments



## Step Four: Generate Reports and Track Progress

Once you have assigned PMT lesson and assessments to students, you can use the PMT reports to monitor the effects of the intervention and enrichment exercises. Reports include:

Class Comprehensive Report

Reports - Class Comprehensive Report

Select Class

Class: VI Leaf's Second Grade Math Class Due Date Range: Aug 01, 2013 - Jul 31, 2014 Report Date: Jul 25, 2014

Student	Overall Average	ISE Lesson			Homework Activity	Tests and Quizzes
		Total	Elaborate	Evaluate		
Class Total	78%	NA	NA	NA	99%	77%
Wright, Samantha (09)	77%	NA	NA	NA	99%	77%
Greene, Cynthia (09)	38%	NA	NA	NA	NA	38%
Palmer, Sally (09)	64%	NA	NA	NA	NA	64%
Galvin, Carl (09)	43%	NA	NA	NA	NA	43%
Adams, Michael G (09)	70%	NA	NA	NA	82%	62%

**Class Comprehensive Overview and Class Progress Reports:** These reports show how students are doing on all PMT assignments.

Daily Intervention Assignment Report

Report Date: 09/22/2014 11:43 AM

Class: HMH Algebra 1

Due Date Range: All Dates

Assignment: Mod 1 Quantitative Reasoning - Ready to Go On? - Due 09/30/2014 10:00 AM

	Warm-up		Assignment		Enrichment	
	Assigned	Score	Score	Assigned	Score	Score
.Blanca	Y	2/2=100%	88%	N	NA	NA
.Rob	Y	2/2=100%	75%	N	NA	NA
.Brendan	Y	1/1=100%	100%	Y	Pending	NA
.Benito	NA	NA	NA	NA	NA	NA

**Course Intervention, Daily Intervention, and State Standards-Based Intervention Reports:** These reports show the details of student performance on PMT remediation assignments.

Standards

Standards: National Common Core - Select -

Class Summary

Standards	Avg. Actual Time	Avg. Estimated Proficiency	Cross Breakdown	Very low	Low	Medium	High	Very high
National Common Core 5	3m	Low		1	1	2	0	0
National Common Core 4	3m	High		0	0	1	1	0
National Common Core 3	3m	Very High		0	0	0	0	2
National Common Core 6	4m	High		0	0	0	0	0
National Common Core 7	3m	High		0	0	1	1	0
National Common Core 1st	3m	Very High		0	0	0	0	2
National Common Core 2	6m	Low		0	2	0	0	0
National Common Core 1st	6m	Low		0	2	0	0	0

**Knewton Analytics Report:** This report displays student proficiency information on PMT assignments by standard.